

Level 9-10

Bullet Resistant
MILITARY ORDNANCE

SPECIFICATIONS

Frame	12 GA. Cold-rolled steel
Door	12 GA. Cold-rolled steel; 1-13/16 inches thick ASTM A1008 / A1008M
Armor	DSM Proprietary
Paint	Prime Painted
Hinges	Stainless Steel Continuous Pin & Barrel w/ SS Bearings
Lock Prep	As specified

OPTIONS*

Door Types	F, N, V, G, FG, FG2 and Pairs
Stainless Steel	Type 316L or Type 304 ASTM A240 / A240M
Galvanized Steel	ASTM A653 / A653M – A60
Vision Panel	DSM Proprietary
Blast Resistant**	Up to 10 psi with long duration
Hinges	Heavy Duty Butt Hinges with SS Bearings
Lock	Cylindrical Lock or Mortise Lock
Customizations	Size, Hardware and Features

* Some options are mutually exclusive

** Special door construction

INDEPENDENT VERIFICATION AND QUALIFICATION TESTING

Southwest Research Institute
UL 752
NIJ 0108.01
ASTM F1233

DeanSteel Manufacturing Company
931 S. Flores Street
San Antonio, TX 78204

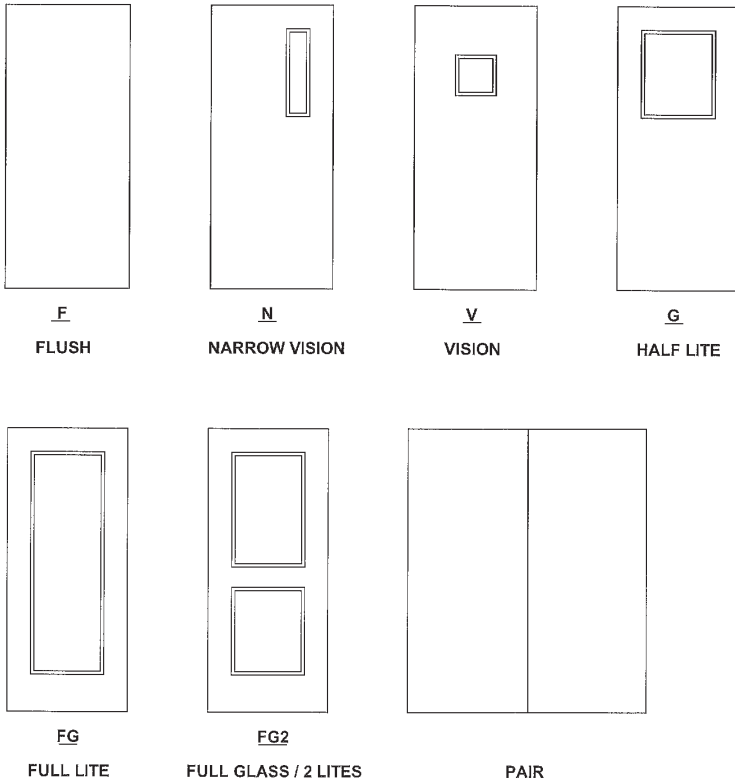
P 800.825.8271
F 210.226.0913
www.DeanSteel.com



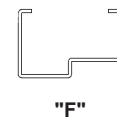
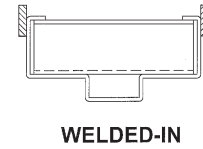
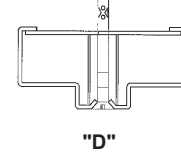
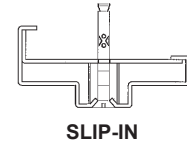
**MADE IN AMERICA
AND VETERAN OWNED**



Door Types



Frame Types



Testing Standards

UL 752		
Level 1	9mm	3 Shots
Level 2	.357 Magnum	3 Shots
Level 3	.44 Magnum	3 Shots
Level 4	.30 Caliber	1 Shot
Level 5	7.62mm FMCJ	1 Shot
Level 6	9mm	5 Shots
Level 7	5.56mm	5 Shots
Level 8	7.62mm FMCJ	5 Shots
Level 9	.30-06 / APM2	1 Shot
Level 10	.50 Caliber / M2	1 Shot
Supplementary Shotgun	12 guage buckshot & slug	3 Shots

NIJ 0108.01		
Level I	22 Long Rifle	5 Shots
	.38 Special	5 Shots
Level II	.357 Magnum	5 Shots
	9mm	5 Shots
Level III	7.62mm	5 Shots
Level IIIA	.44 Magnum	5 Shots
	9mm	5 Shots
Level IV	.30-06 Armor Piercing	1 Shot

ASTM F1233		
HG1	.38 Special	3 Shots
HG2	.357 Magnum	3 Shots
HG3	9mm	3 Shots
HG5	.44 Magnum	3 Shots
R1	.223 (5.56mm)	3 Shots
R2	.30-06	3 Shots
R3	.308 Winchester	3 Shots
R4-AP	.30-06 Armor Piercing	1 Shot
SH1	Shotgun Buck Shot	1 Shot
SH2	Shotgun Slug	3 Shots
SMG	Submachine Gun	3 Shots

MIL-SAMIT / 7.62 NATO		
Part 1	147 grain / M80	25 Shots
Part 2	150 grain / M61 AP	25 Shots



Testing MIL-SAMIT Part 1 - .30 cal 7.62 NATO M80
25 shots in an 8-inch circle