

# DB-2

### SPECIFICATIONS

<b>Materials</b>	18 GA Cold-rolled Steel 16 GA Square 1 1/2" Tubing
<b>Paint</b>	Baked Enamel
<b>Dimensions</b>	Overall: 36"W x 81"L x 71"H Berth Tub: 36"W x 78"L x 6"H
<b>Drawers</b>	22"W x 20"D x 6.75"H Drawers with HASP for Pad Lock
<b>Headboards / Footboards</b>	18 GA Cold-rolled Steel panel

### OPTIONS

<b>Headboards / Footboards</b>	Reinforcements for TV Mounts, Lights, and Cable Raceways
<b>Grab Bars</b>	Stainless Steel
<b>Ladder</b>	Stainless Steel or Wood Tread
<b>Life Jacket / Storage Rack</b>	18 GA Cold-rolled Steel 24"W x 18"D x 8"H
<b>Curtains</b>	Flame retardant fabric / blackout lining
<b>Curtain Supports</b>	16 GA 1 1/2" Steel Tubing
<b>Drawers</b>	Multiple configurations
<b>Mattress</b>	32"W x 74"L x 8"H
<b>Tub</b>	Scalloped side panel for ease of entry / exit
<b>Customizations</b>	Size, Features and virtually unlimited combinations



*Drawers shown are an option*

DeanSteel Manufacturing Company  
931 S. Flores Street  
San Antonio, TX 78204

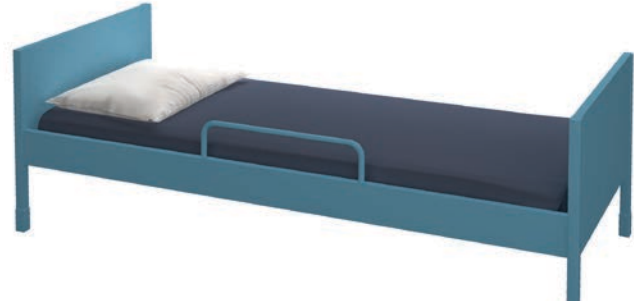
P 800.825.8271  
F 210.226.0913  
www.DeanSteel.com



MADE IN AMERICA  
AND VETERAN OWNED

**DB-2** | Double Marine Berth with Options

**SB-2** | Single Marine Berth



## ACCESSORIES



**Ladder**  
BAKED ENAMEL



**Ladder**  
STAINLESS STEEL



**Tall Ladder**  
BAKED ENAMEL

**Grab Bar**  
STAINLESS STEEL



**Ladder**  
OAK TREAD  
BAKED ENAMEL



**Hospital Configuration**