

DSL B-1

Blast Resistant

SPECIFICATIONS

Frame	16 GA. Cold-rolled steel
Door	16 GA. Cold-rolled steel; 1-3/4 inches thick ASTM A1008 / A1008M
Blast Resistance	Up to 2 psi peak blast pressure for all blast load durations
Paint	Prime Painted
Hinges	(3) 4 1/2" BB NRP Standard Weight Butt Hinges
Lock	Grade 1 Mortise Lock

OPTIONS*

Door Types	F, N, V, G, FG, FG2 and Pairs
Stainless Steel	Type 316L or Type 304 ASTM A240 / A240M
Galvanized Steel	ASTM A653 / A653M – A60
Vision Panel	DSM Proprietary
Fire Rated	Up to 3 hours for Flush Doors Up to 90 minutes with Vision Panel
Ballistic Resistant**	Up to Level 8
Hinges	Stainless Steel Continuous Pin & Barrel w/ SS Bearings Heavy Duty Butt Hinges with SS Bearings
Lock	Cylindrical Lock or Mortise Lock
Stock	Multiple sizes in stock
Customizations	Size, Hardware and Features

* Some options are mutually exclusive

** Special door construction

INDEPENDENT VERIFICATION AND QUALIFICATION TESTING

Architectural Testing, Inc.

Baker Engineering and Risk Consultants, Inc.



DeanSteel Manufacturing Company
931 S. Flores Street
San Antonio, TX 78204

P 800.825.8271
F 210.226.0913
www.DeanSteel.com



MADE IN AMERICA
AND VETERAN OWNED

Door Types



F
FLUSH



N
NARROW VISION



V
VISION



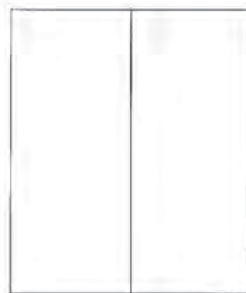
G
HALF LITE



FG
FULL LITE

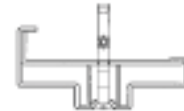


FG2
FULL GLASS / 2 LITES

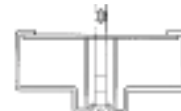


PAIR

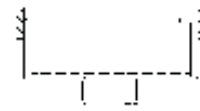
Frame Types



SLIP-IN



"D"



WELDED-IN



"F"